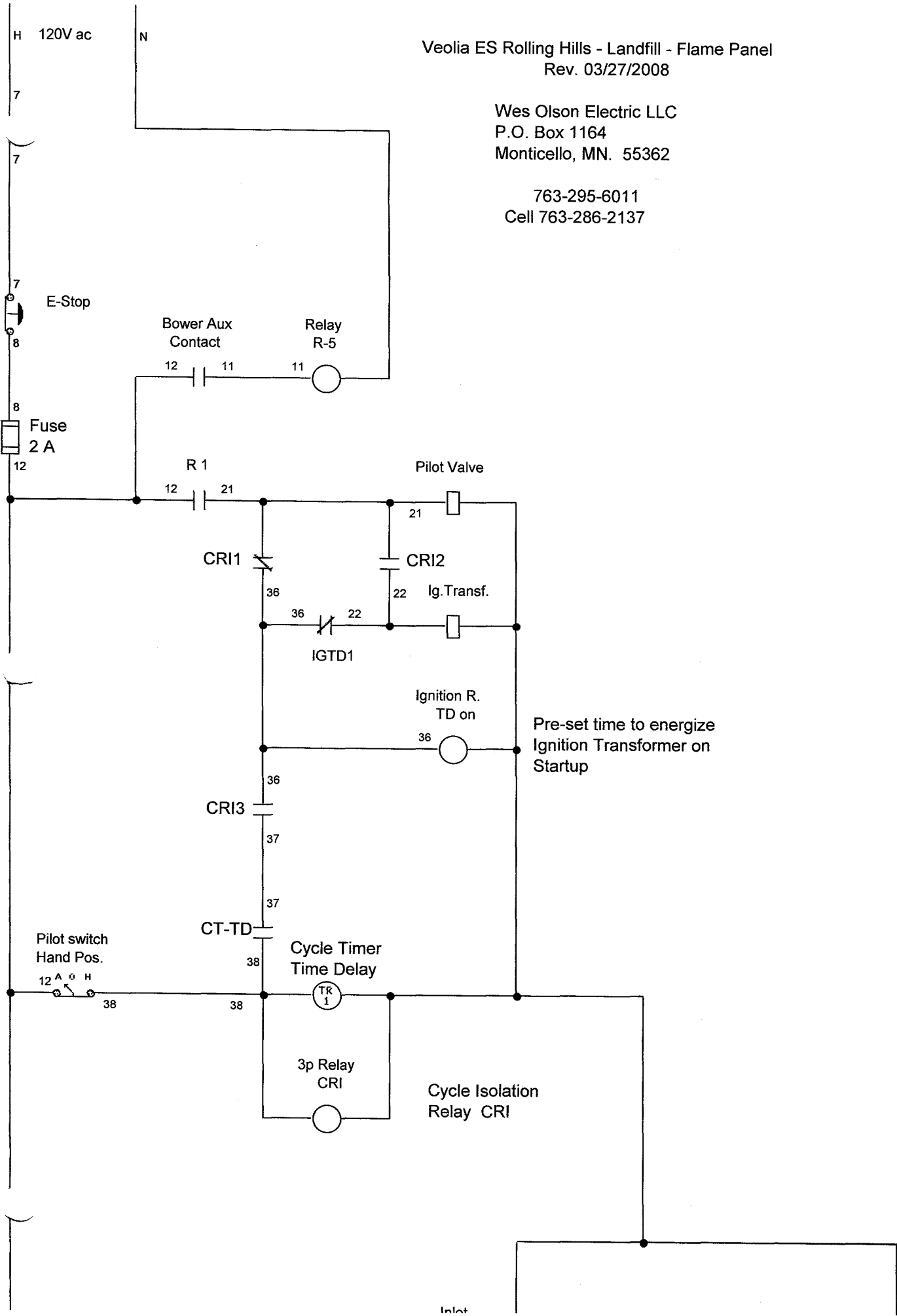
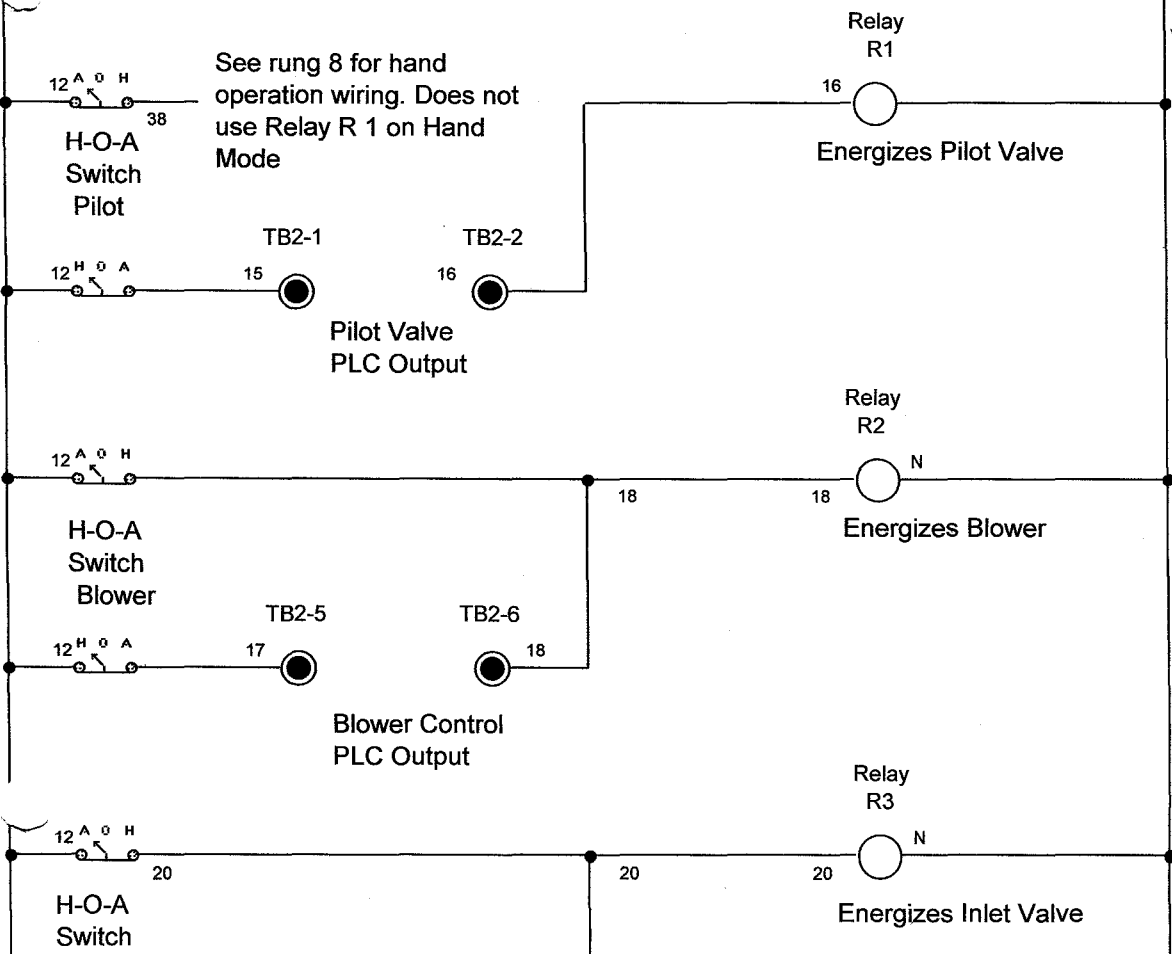
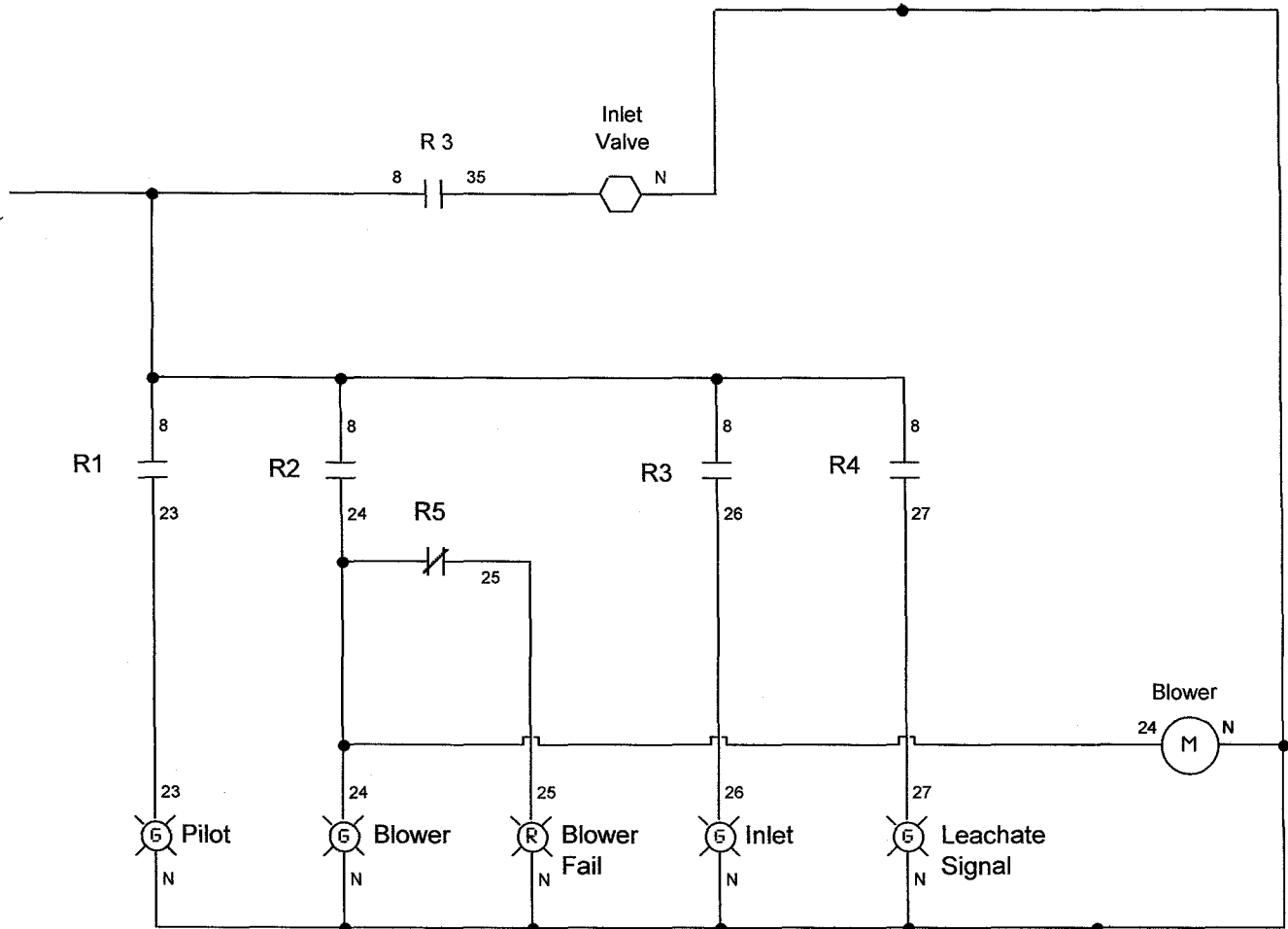


Veolia ES Rolling Hills - Landfill - Flame Panel  
Rev. 03/27/2008

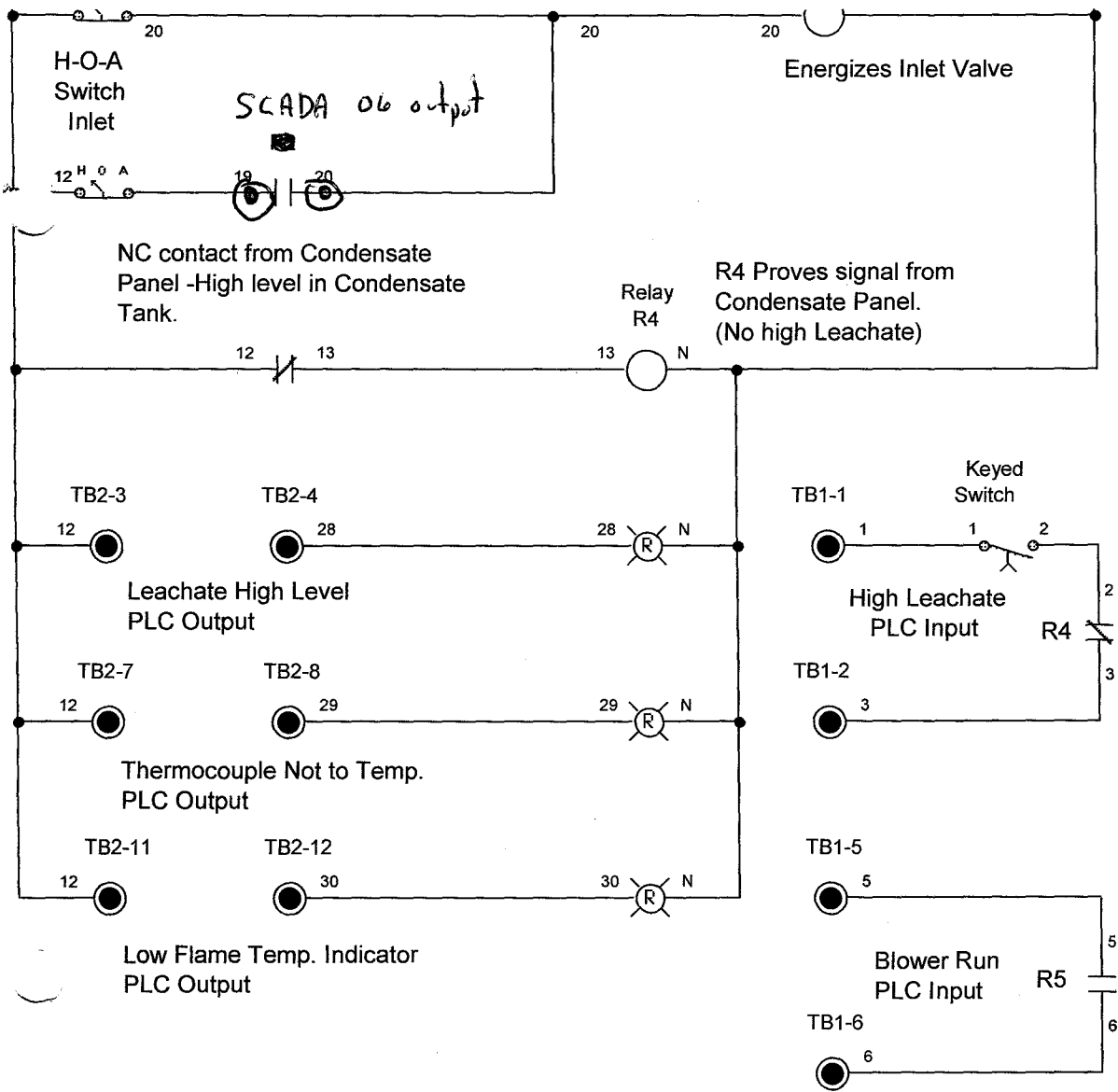
Wes Olson Electric LLC  
P.O. Box 1164  
Monticello, MN. 55362

763-295-6011  
Cell 763-286-2137





Veolia ES Rolling Hills  
 Landfill - Flame Panel  
 10/05/2006  
  
 Wes Olson Electric LLC  
 P.O. Box 1164  
 Monticello, MN. 55362  
  
 763-295-6011  
 Cell 763-286-2137



**Important information about Pilot HAND-OFF-Automatic wiring**

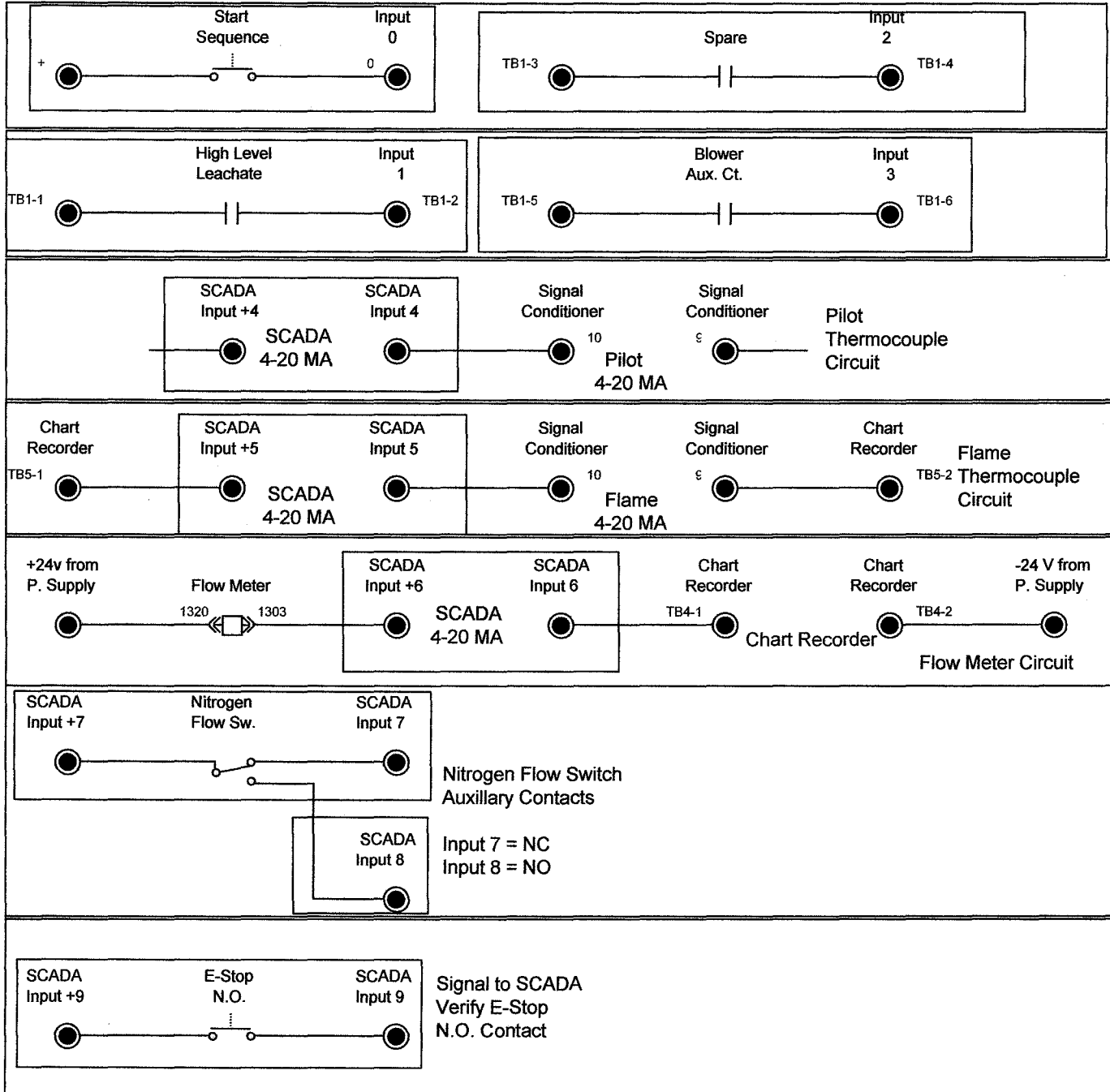
**Auto Mode:** PLC Programmed Time energizes Relay R 1, which energizes Pilot valve and begins Ignition Time Delay Relay to energize the Ignition transformer for preset time.

**Hand Mode:** Cycle Timer is energized, closing contact feeding pilot valve and ignition transformer. This energizes pilot and ignition transformer each cycle of cycle timer. Hand mode energizes Cycle isolation relay, which parallels pilot valve to ignition transformer, and isolates pilot feedback of terminal 21. The series of cycle timer NO relay and Cycle isolation relay between terminals 36 & 38 assures a full ignition and pilot "bump"

Wes Olson Electric LLC  
P.O. Box 1164  
Monticello, MN. 55362

763-295-6011  
Cell 763-286-2137

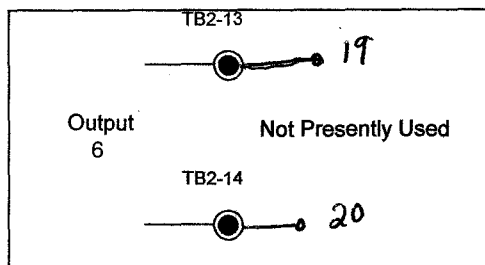
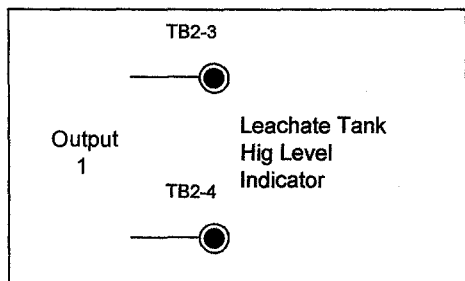
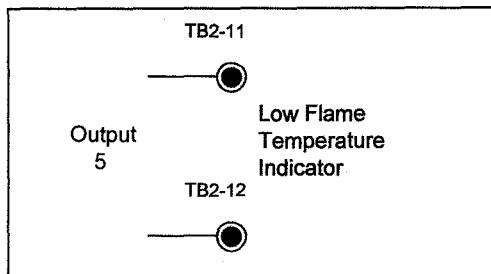
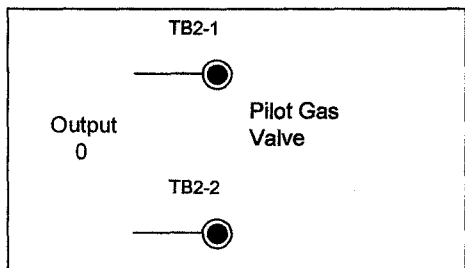
# SCADA Input Connections



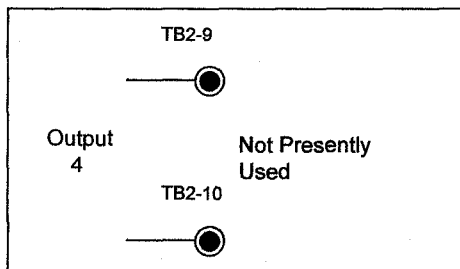
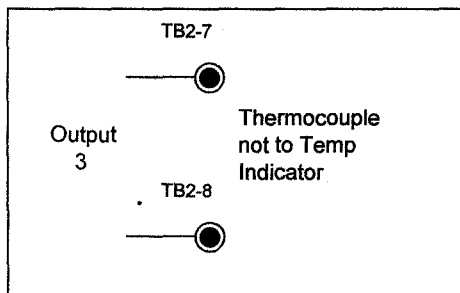
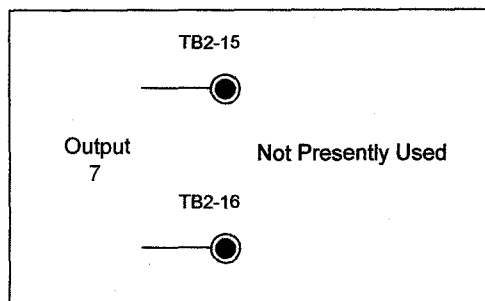
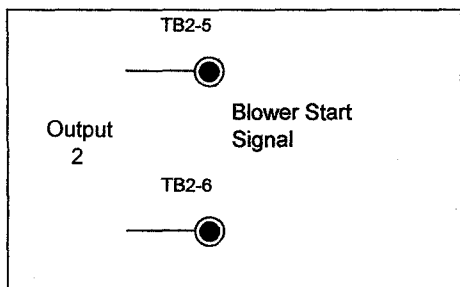
Wes Olson Electric LLC  
P.O. Box 1164  
Monticello, MN. 55362

763-295-6011  
Cell 763-286-2137

# SCADA Outputs



*Inlet Valves  
(Nitrogen)*



Refer to Control wiring diagrams for all input and output connections.

Any revisions should be clearly marked on cabinet diagrams, and both Office Copy folder and Field Copy folder.

Wes Olson Electric LLC  
P.O. Box 1164  
Monticello, MN. 55362

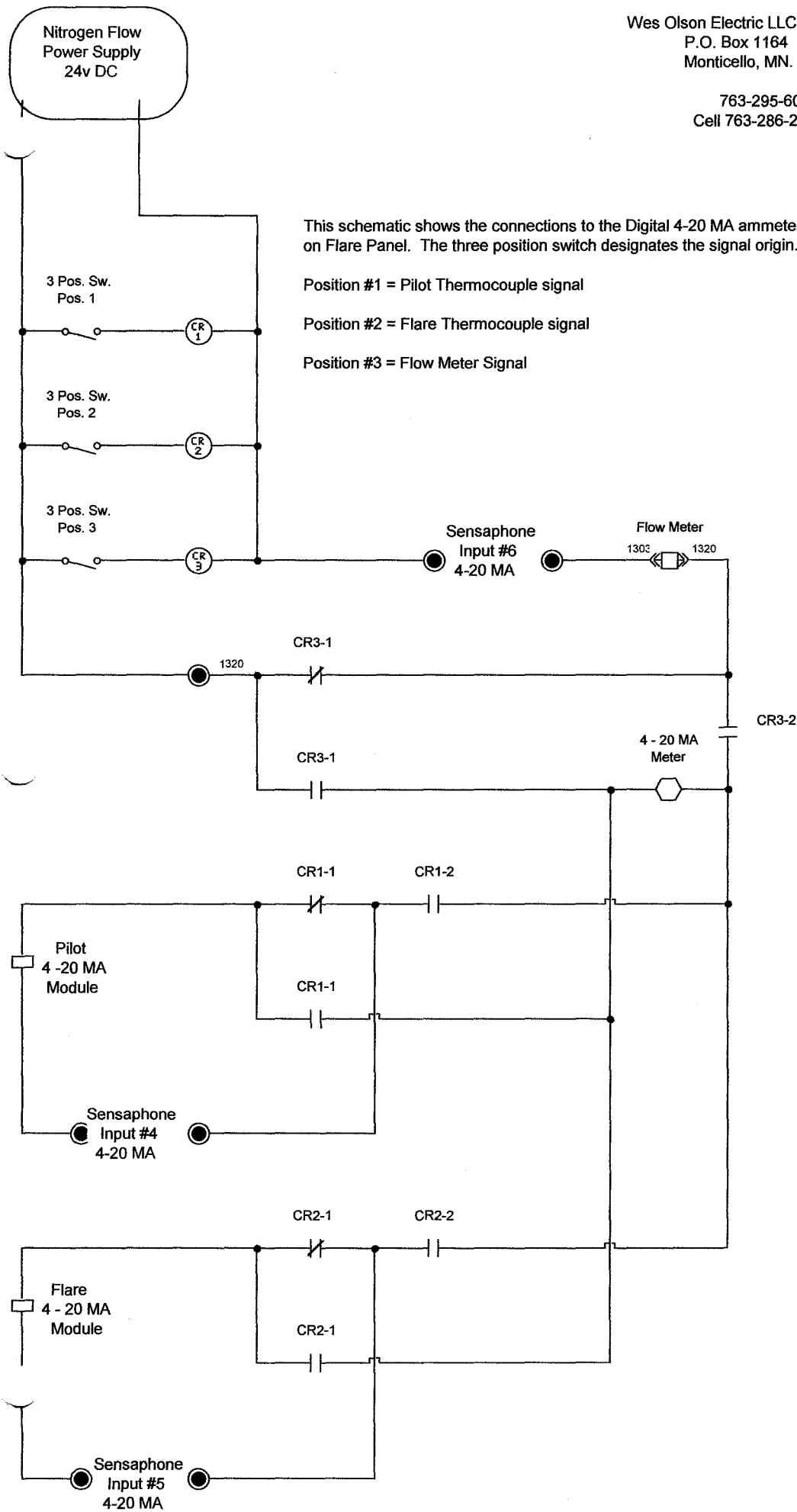
763-295-6011  
Cell 763-286-2137

This schematic shows the connections to the Digital 4-20 MA ammeter on Flare Panel. The three position switch designates the signal origin.

Position #1 = Pilot Thermocouple signal

Position #2 = Flare Thermocouple signal

Position #3 = Flow Meter Signal



Wes Olson Electric LLC  
P.O. Box 1164  
Monticello, MN. 55362

763-295-6011  
Cell 763-286-2137

Schematics for SCADA outputs #3  
(Pilot Temperature) and Output #5  
(Flare Temperature).

